

**BUSINESS INDICATORS**AUSTRALIAN  
CAPITAL  
TERRITORY

EMBARGO: 11:30AM (CANBERRA TIME) FRI 23 FEB 2001

**C O N T E N T S**

	<i>page</i>
Notes .....	2
Summary of findings .....	3
Selected business indicators .....	5
FEATURE ARTICLE	
Labour Mobility in the ACT .....	7
TABLES	
<b>1</b> Business indicators .....	10
<b>2</b> ACT in relation to the rest of Australia .....	13
<b>3</b> ACT in relation to the rest of Australia—percentage changes .....	14
INFORMATION	
Index of Feature Articles published in ACT Business Indicators .....	15

- For further information about these and related statistics, contact Nives Marelic on Canberra 02 6207 0315, or the National Information Service on 1300 135 070.

## NOTES

### FORTHCOMING ISSUES

<i>ISSUE</i>	<i>RELEASE DATE</i>
March 2001	23 March 2001
April 2001	20 April 2001
May 2001	18 May 2001
June 2001	22 June 2001
July 2001	20 July 2001
August 2001	17 August 2001

### DATA CHANGES

Consumer Price Index This issue contains the 14th Australian Consumer Price Series which incorporates an updated commodity classification and weighting patterns. Minor changes to the composition of some groups have been made. For further details of changes resulting from the introduction of the 14th series Consumer Price Index (CPI), refer to *Information Paper: Introduction of the 14th Series Australian Consumer Price Index* (Cat. no. 6456.0) which was released 29 September 2000.

### THE NEW TAX SYSTEM (TNTS)

ABS statistical series are being impacted to varying degrees as a result of The New Tax System, introduced in Australia from 1 July 2000. TNTS includes the removal of Wholesale Sales Tax on most items and the introduction of a Goods and Services Tax (GST). For full effect of those changes, refer to source publications as annotated at the end of the tables in this publication.

Consumer Price Index As CPI measures final transaction prices inclusive of indirect taxes, the introduction of The New Tax System (TNTS) had a direct impact on the CPI. The September series in particular has been affected by the introduction of the goods and services tax and the removal of wholesale and some state and territory taxes. For further information see *Information Paper: Price Indexes and The New Tax System* (Cat. no. 6425.0).

### SYMBOLS AND OTHER USAGES

qtr	quarter
n.a.	not available
no.	number
n.p.	not available for publication
nip	30 mls
p	preliminary
'000	thousands
%	per cent
. .	not applicable
*	Represents data with a standard error of greater than 25%. Caution should be exercised when using this data.
—	nil or rounded to zero

Tracy Stewart  
Regional Director, Australian Capital Territory

## SUMMARY OF FINDINGS

### UPDATED SERIES

Series updated since the January 2001 issue are: average retail prices, building approvals, consumer price index, housing finance, industrial disputes, labour force, new motor vehicle registrations, retail turnover and wage and salary earners. The feature article this month, on page 7, is Labour Mobility in the ACT.

**Building approvals** The trend number of dwelling units approved in the ACT decreased by 2.5% in December 2000 to 153 dwelling units from the previous month. Nationally, the trend number of dwelling units approved in December 2000 increased by 3.4% to 9,930 dwelling units since the previous month.

The value of non-residential building approvals (original series) in the ACT in December 2000 was \$12.2 million, up 165.2% over the previous month, and was up 38.6% compared with December 1999. Nationally, the value of non-residential building approvals for December 2000 was \$865.4 million, down 10.2% from the previous month, and was up 3.1% compared with December 1999.

**Consumer price index** The ACT experienced an increase of 0.3% in the All Groups Index for the December quarter 2000. This was almost at the same level with the weighted average of the eight capital cities which also increased by 0.3% during the same period. There was an increase in the ACT annual CPI rate to December quarter 2000 of 6%, while the index for the weighted average of the eight capital cities recorded an increase of 5.8% for the same period.

**Housing finance** The trend number of dwelling units financed (including re-financing) in the ACT in December 2000 was 759, an increase of 3.0% over the previous month. The trend estimate for the value of commitments in the ACT in December 2000 increased by 2.2% to \$91 million compared with the previous month. Nationally, the trend number of dwelling units financed (including refinancing) was 44,292, up 1.4% compared with the previous month, while the trend estimate for the value of commitments also increased by 1.5% to \$5,624 million compared with the previous month.

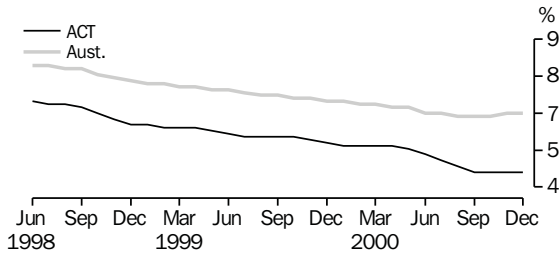
**Industrial disputes** In the 12 months to October 2000 in the ACT there were 7 working days lost per thousand employees in the ACT compared to 81 days nationally. This reflects a decrease in the number of working days lost of 12.5% for the ACT and a decrease of 2.4% nationally since the previous month.

**Labour force** At January 2001, the trend unemployment rate for the ACT increased 0.1 percentage points from December 2000 to 4.8% and was down 0.6 percentage points since January 2000. The number of persons unemployed rose 2.4% to 8,500 compared to the previous month, and decreased 9.6% compared with January 2000. ACT trend employment in January 2001 decreased from the previous month by 0.3% to 169,700 persons and increased 2.7% over the last 12 months. The trend ACT participation rate for January 2001 fell by 0.2 percentage points and the national rate decreased by 0.1 percentage points. Nationally, trend employment decreased by 0.1% to 9,072,100 persons in January 2001, while the trend unemployment increased by 1.1% to 644,600 persons. The national trend unemployment rate remained steady at 6.6%.

New motor vehicle registrations	The trend estimate for ACT new motor vehicle registrations in December 2000 was 1,208, up 1.3% from the previous month, and up 8.1% from December 1999. Nationally, the trend for total new motor vehicle registrations in December 2000 increased by 1.2% to 69,701 from November 2000, and was up 12.6% compared with December 1999.
Retail turnover	The retail turnover in the ACT for December 2000 was \$346.1 million, an increase of 27% over the previous month, and up 13.4% compared to December 1999. Nationally, retail turnover was up 26.7% over the previous month, and was up 3.4% compared with the previous year.
Wage and salary earners	The trend number of wage and salary earners employed in the public and private sectors in the ACT was 153,200 persons in the September quarter 2000, a decrease of 1,200 persons (0.8%) over the June quarter 2000. This compares to a national increase of 60,700 (0.8%) in the same period. The proportion of private sector wage and salary earners in the ACT is 54%. This data excludes self-employed persons.

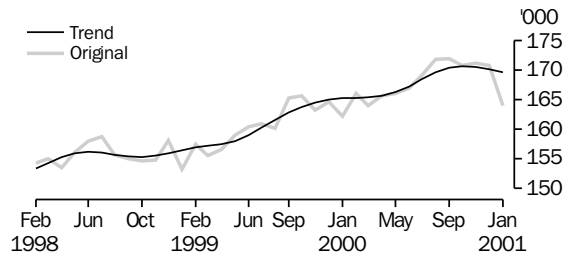
# SELECTED BUSINESS INDICATORS

UNEMPLOYMENT RATE: Trend



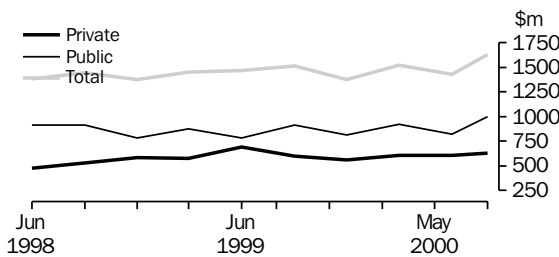
Source: Labour Force, Australia (Cat. no. 6202.0).

EMPLOYED PERSONS



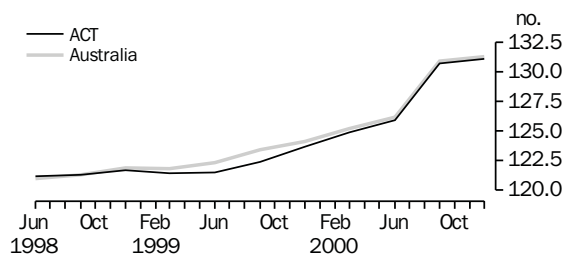
Source: Labour Force, Australia (Cat. no. 6202.0).

GROSS EARNINGS, Sector: Original



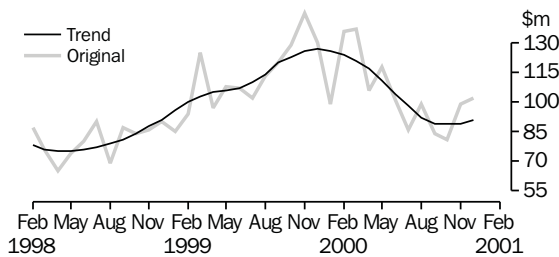
Source: Labour Force, Australia (Cat. no. 6202.0).

CONSUMER PRICE INDEX



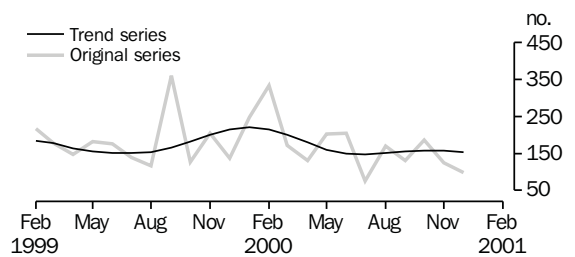
Source: Consumer Price Index, Australia (Cat. no. 6401.0).

HOUSING FINANCE



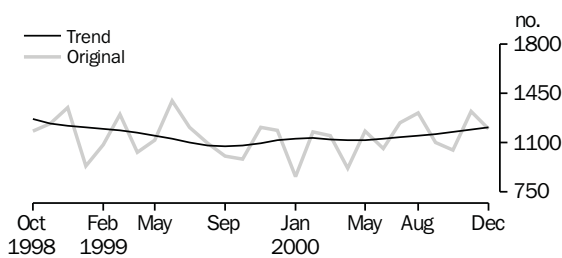
Source: Housing Finance, Australia (Cat. no. 5609.0).

BUILDING APPROVALS, Dwelling units approved



Source: Building Approvals, Australia (Cat. no. 8731.0).

NEW MOTOR VEHICLE REGISTRATIONS



Source: New Motor Vehicle Registrations, Australia (Cat. no. 9301.0).



In the ACT, an estimated 180,600 people aged 15–69 years had worked at some time during the year ending February 2000. Of these people:

- 167,200 (92.6%) were still working in February 2000;
- 8,900 (4.9%) were not in the labour force; and
- 4,600 (2.5%) were looking for work.

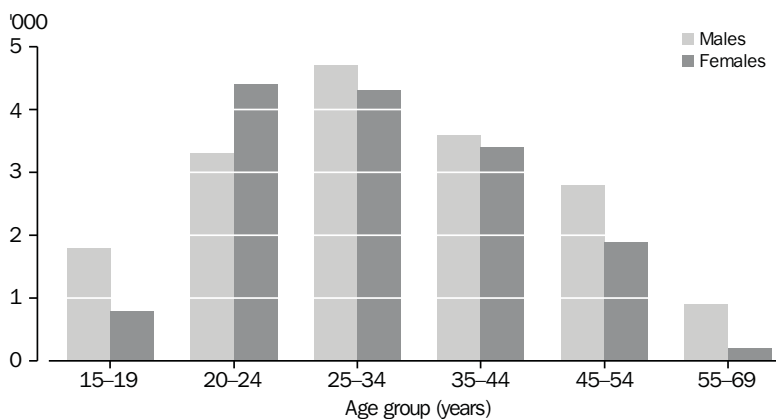
Of the 180,600 people who had worked at some time during the year ending February 2000, 32,100 (17.8%) were job mobile. That is, they changed their employer and/or their locality at least once in that year. Of those 32,100 who were job mobile during the year ending February 2000:

- 23,600 (73.5%) changed their employer or business; and
- 8,600 (26.8%) changed locality while still working for the same employer or business.

Age Of the 17,100 mobile males, those most mobile were spread over the age groups 25–34 years (27.5%), followed by 35–44 years (21.0%) and 20–24 years (19.3%).

Of the 15,000 mobile females, the most mobile were in the age groups 20–24 years (29.3%), followed by 25–34 years (28.7%) and the 35–44 years (22.7%).

JOB MOBILITY BY AGE



Marital status As a proportion of all married people who worked in this period, 15.3% were mobile. In comparison, 21.2% of all unmarried people were job mobile. Similar proportions are reflected for males (21.5% and 16.4% of all males respectively) and females (21% and 14.1% of all females respectively). Half of all mobile people (16,100) were married.

Educational attainment Over half (57.0%) of those who had worked in the year ended February 2000 and were job mobile had post school qualifications compared to those without post school qualifications (40.2%), while 2.8% were still at school.

Change of state of usual residence

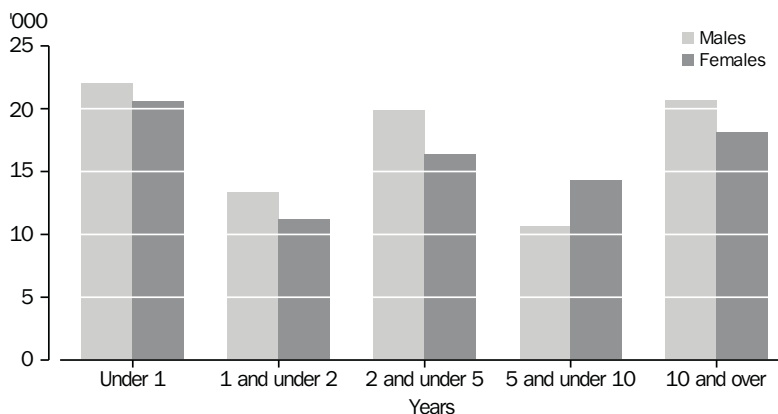
Of the 167,200 ACT people working at February 2000, 8,500 (5.1%) had moved into the ACT from another State or Territory in the previous 12 months. Over three-quarters of those people (6,600 or 77.6%) had been working at February 1999.

DURATION OF CURRENT JOB

Of the 167,200 ACT people working at February 2000, almost two-thirds (74.5% or 124,600 people) had been in their current job for more an one year. Duration of current job has been aggregated into the following groups:

- less than one year — 42,600 (25.5%);
- one and under two years — 24,500 (14.7%);
- two and under three years — 18,400 (11.0%);
- three and under five years — 17,900 (10.7%);
- five and under ten years — 24,900 (14.9%); and
- 10 years or more — 38,800 (23.2%).

DURATION OF CURRENT JOB



CHANGE OF OCCUPATION OR INDUSTRY

Of the 167,200 people who were working in the ACT at February 2000:

- 124,600 (74.5%) had remained in their current job for one year or more, therefore had not changed their occupation or industry;
- 28,500 (17.1%) had been in their job for less than one year but had left a previous job in the year to February 2000; and
- 14,100 (8.4%) had been in their job for less than one year and had no previous job in the year to February 2000.

Of the 28,500 people who had been in their current job for less than one year and had another job in the year to February 2000:

- 12,500 (43.9%) had changed industry; and
- 10,300 (36.1%) had changed occupation.



## BACKGROUND

Statistics in this feature article were obtained from the Labour Mobility Survey, conducted throughout Australia in February 2000 as a supplement to the Australian Bureau of Statistics monthly Labour Force Survey. This survey provides information on job mobility and job tenure for persons aged 15–69 years. The survey collected details about jobs held during the 12 months ending February 2000, including whether changed employer or locality and reasons for change, full-time or part-time status, occupation, industry and duration of job. This information is cross-classified by a range of personal characteristics such as age, sex and educational attainment levels, and employment characteristics such as industry and occupation. For further details, refer to *Labour Mobility, Australia* (Cat. no. 6209.0).

Indicator	Unit	ACT			Aust.		
		% change from			% change from		
		Latest figure	Previous period	Same period previous year	Latest figure	Previous period	Same period previous year
<b>POPULATION, VITALS AND LABOUR</b>							
POPULATION, Jun qtr 00	'000	310.8	—	0.5	19 157.0	0.3	1.2
Natural increase	no.	633	-9.6	-12.2	33 179	11.8	9.5
Net migration	no.	-550	-833.3	-119.1	18 430	-22.2	6.4
<i>Total growth</i>	no.	83	-89.3	-82.3	51 609	-3.3	8.4
<b>LABOUR FORCE, Jan 01</b>							
Original series							
Employed	'000	164.0	-4.0	1.1	8 946.0	-3.0	2.0
Unemployed	'000	9.7	24.4	-7.6	689.5	8.1	-1.0
Unemployment rate	%	5.6	1.2	-0.5	7.2	0.7	-0.2
Participation rate	%	71.4	-2.0	-0.9	62.9	-1.5	0.3
Long-term unemployed, Dec 00	no.	2 178	3.9	24.0	160 504	4.5	-15.4
Long-term unemployed as percentage of total unemployed, Dec 00	%	27.9	1.9	8.3	25.2	-0.4	-3.2
Trend series, Jan 01							
Employed	'000	169.7	-0.3	2.7	9 072.1	-0.1	1.7
Unemployed	'000	8.5	2.4	-9.6	644.6	1.1	-2.0
Unemployment rate	%	4.8	0.1	-0.6	6.6	—	-0.3
Participation rate	%	73.2	-0.3	0.1	63.4	-0.1	—
<b>WAGE AND SALARY EARNERS</b>							
Number employed—Trend series, Sep qtr 00							
Private sector	'000	83.2	-2.1	2.1	5 870.7	1.2	3.0
Public sector	'000	70.0	0.9	3.6	1 453.6	-0.4	0.4
<i>Total</i>	'000	153.2	-0.8	2.7	7 324.3	0.8	2.5
Gross earnings—Original series, Sep qtr 00							
Private sector	\$m	633.0	4.4	5.1	49 691.4	3.5	5.3
Public sector	\$m	1 000.8	21.4	9.8	16 124.0	7.1	2.6
<i>Total</i>	\$m	1 633.7	14.1	7.9	65 815.4	4.4	4.6
JOB VACANCIES, Nov qtr 00	'000	3.5	16.7	-7.9	118.2	-7.4	14.5
<b>INDUSTRIAL DISPUTES IN PROGRESS, Oct 00</b>							
Working days lost	'000	0.0	—	-100.0	29.3	-5.5	-27.5
Days lost per '000 employees (year ended ref. period)	no.	7.0	-12.5	-79.4	81.0	-2.4	9.5
<b>HOUSING AND BUILDING ACTIVITY</b>							
<b>HOUSING FINANCE, Dec 00</b>							
Secured commitments to individuals for							
Original series							
Construction of dwellings	\$m	8.0	33.3	-42.9	493.0	-8.7	-48.2
Purchase of new dwellings	\$m	5.0	—	—	215.0	3.9	-4.4
Purchase of established dwellings	\$m	89.0	—	-19.8	4 807.0	-7.0	-11.2
Re-financing	\$m	12.0	-14.3	-25.0	1 049.0	-10.0	4.9
<i>Total housing commitments</i>	\$m	102.0	3.0	-21.5	5 515.0	-6.8	-16.3
Seasonally adjusted series							
Total housing commitments	\$m	103.0	12.0	-16.9	6 037.0	11.2	-8.6
Trend series							
Total housing commitments	\$m	91.0	2.2	-28.3	5 624.0	1.5	-15.5
Dwelling units financed	no.	759	3.0	-23.7	44 292	1.4	-8.0
<b>PRICE INDEXES</b>							
Established house price index, Dec qtr 00	no.	143.4	1.0	10.6	147.1	-0.1	7.5
<b>BUILDING APPROVALS, Dec 00</b>							
Original series							
Dwelling units	no.	97	-22.4	-29.2	9 129	-16.0	-39.5
Value of new residential	\$m	13.8	-22.5	-14.3	1 252.4	-14.5	-34.0
Value of residential alterations and additions	\$m	2.7	-38.6	-34.1	273.5	3.4	4.2
Value of non-residential	\$m	12.2	165.2	38.6	865.4	-10.2	3.1
<i>Value of total building</i>	\$m	28.7	6.7	-1.7	2 391.3	-11.2	-20.3
Trend series							
Dwelling units	no.	153	-2.5	-28.8	9 930	3.4	-37.7

Indicator	Unit	ACT			Aust.		
		% change from			% change from		
		Latest figure	Previous period	Same period previous year	Latest figure	Previous period	Same period previous year
<b>HOUSING AND BUILDING ACTIVITY</b> <i>continued</i>							
BUILDING COMMENCEMENTS, Sep qtr 00							
New houses	no.	234	-44.7	-10.3	19 255	-35.8	-33.4
Value of houses commenced	\$m	36.3	-39.5	-5.7	2 705.2	-33.1	-25.4
Value of non-residential building commenced	\$m	26.4	-78.2	-19.8	2 637.9	-23.8	-11.2
Value of total commencements	\$m	87.6	-59.5	-30.4	7 356.5	-26.4	-21.4
ENGINEERING CONSTRUCTION, Sep qtr 00							
Private sector							
Value of work commenced	\$m	23.9	-53.5	56.2	2 263.7	-18.2	-18.0
Value of work done	\$m	33.2	-31.3	32.8	2 725.4	-6.1	-9.0
Value of work yet to be done	\$m	43.6	-22.3	69.0	4 969.2	-0.4	-5.7
Public sector							
Value of work done	\$m	22.2	-28.2	-23.7	1 678.1	-11.9	6.4
<b>PRICES, WAGES AND CONSUMER SPENDING</b>							
CONSUMER PRICE INDEX, Dec qtr 00(a)							
Food	no.	135.9	1.3	3.8	133.4	0.8	3.5
Housing(b)	no.	107.1	0.4	10.2	107.7	0.3	8.1
Transportation(b)	no.	139.3	0.5	6.0	136.4	0.6	7.9
All groups	no.	131.1	0.3	6.0	131.3	0.3	5.8
AVERAGE WEEKLY EARNINGS, Aug qtr 00							
Full-time adult ordinary time earnings							
Original series							
Males	\$	992.1	1.3	10.3	848.3	1.9	6.5
Females	\$	832.2	0.7	6.2	710.9	1.9	5.2
Persons	\$	917.3	0.6	7.7	798.1	2.0	6.2
Trend series							
Males	\$	987.5	0.7	8.7	846.8	1.4	5.8
Females	\$	832.7	0.8	4.8	710.2	1.5	5.0
Persons	\$	916.8	0.8	6.5	796.6	1.5	5.5
WAGE COST INDEX, Sep qtr 00(c)							
Public sector	no.	108.2	1.5	2.7	110.3	1.1	2.9
Private sector	no.	110.1	2.1	4.0	109.5	1.3	3.1
Total	no.	108.9	1.8	3.1	109.7	1.2	3.1
<b>RETAIL TURNOVER, Dec 00</b>							
Trend series							
Food retailing	\$m	96.0	0.4	17.6	5 070.7	0.1	3.5
Department stores	\$m	26.5	0.4	3.5	1 097.4	-0.1	2.3
Hospitality and services	\$m	43.5	1.9	28.7	2 231.9	-0.3	6.1
All other retailing	\$m	96.6	0.9	7.9	4 347.5	0.6	5.3
Total	\$m	262.6	0.8	13.9	12 747.5	0.2	4.4

Indicator	Unit	ACT			Aust.		
		% change from			% change from		
		Latest figure	Previous period	Same period previous year	Latest figure	Previous period	Same period previous year
<b>TOURIST ACCOMMODATION, Sep qtr 00</b>							
Original series							
Room nights occupied	'000	262.4	-11.5	-7.9	10 449.0	4.5	0.5
Room occupancy rate	%	56.8	-7.9	-0.8	58.4	1.3	-2.4
Guest nights	'000	443.5	-8.9	-8.0	18 589.0	7.0	-0.2
Guest arrivals	'000	201.8	-9.4	-11.1	7 979.0	1.7	-3.9
Takings from accommodation	\$'000	28 747.0	-4.5	1.8	1 302 158.0	25.3	20.8
<b>NEW MOTOR VEHICLE REGISTRATIONS, Dec 00</b>							
Original series	no.	1 197	-9.7	0.8	73 401	7.3	10.1
Seasonally adjusted series	no.	1 227	1.2	12.4	75 259	15.4	19.1
Trend series	no.	1 208	1.3	8.1	69 701	1.2	12.6
<b>STATE ACCOUNTS, Sep qtr 00</b>							
Trend series (chain volume measure)(a)							
General government final consumption expenditure	\$m	2 575	0.9	13.8	29 602	0.5	6.9
Household final consumption expenditure	\$m	1 777	1.3	8.2	94 445	0.7	3.7
Private gross fixed capital formation	\$m	358	-7.0	6.9	30 665	-1.5	2.4
Public gross fixed capital formation	\$m	222	-4.7	-17.8	6 730	0.9	-3.7
State final demand	\$m	4 927	0.1	10.3	159 314	0.9	4.4
<b>GROSS STATE PRODUCT</b>							
(trend, chain volume measures), 1999-00	\$m	12 669	4.9	..	620 963	4.3	..
<b>PRIVATE NEW CAPITAL EXPENDITURE, Sep qtr 00</b>							
Original series (at current prices)							
Buildings and structures	\$m	31	29.2	82.4	2 665	-17.4	-15.0
Equipment, plant and machinery	\$m	50	-41.9	-10.7	7 306	-10.2	-2.8
Total	\$m	81	-26.4	12.5	9 971	-12.2	-6.4
Trend series (at current prices)							
Buildings and structures	\$m	29	11.5	52.6	3 012	3.1	5.1
Equipment, plant and machinery	\$m	60	-16.7	7.1	7 523	-0.3	-0.8
Total	\$m	89	-9.2	18.7	10 535	0.6	0.9
<b>INTERNATIONAL MERCHANDISE TRADE, Sep qtr 00</b>							
Imports	\$m	2	-33.3	0.0	30406	5.3	16.9
Exports	\$m	5	-28.6	-44.4	28500	6.9	30.2
<b>BUSINESS EXPECTATIONS, TRADING PERFORMANCE, OPERATING INCOME</b>							
Short term expected quarterly change, Mar qtr 01	%	4.1	—	..	-3.0	—	..
Long term expected annual change Dec qtr 01	%	4.3	—	..	1.5	—	..

(a) Quarterly state final demand details are released as a special data service (Cat. no. 5206.0.40.001).

(b) Reference year for chain volume measures is 1998-99.

Source: Australian Demographic Statistics (Cat. no. 3101.0); Australian National Accounts: Quarterly State Details (Cat. no. 5206.0.40.001); Average Weekly Earnings, States and Australia (Cat. no. 6302.0); Building Activity, Australia (Cat. no. 8752.0); Building Approvals, Australia (Cat. no. 8731.0); Consumer Price Index (Cat. no. 6401.0); Housing Finance, Australia (Cat. no. 5609.0); House Price Indexes (Cat. no. 6416.0); Industrial Disputes, Australia (Cat. no. 6321.0); Job Vacancies, Australia (Cat. no. 6354.0); Labour Force, Australia, Preliminary (Cat. no. 6202.0); New Motor Vehicle Registrations, Australia Preliminary (Cat. no. 9301.0); Private New Capital Expenditure, State Estimates (Cat. no. 5646.0); Retail Trade, Australia (Cat. no. 8501.0); Tourist Accommodation, Australia (Cat. no. 8635.0); Wage Cost Index, Australia (Cat. no. 6345.0).

Indicator	Unit	Latest period	NSW	Vic.	Qld	SA	WA	Tas.	NT	ACT	Aust.
<b>POPULATION</b>	'000	Jun qtr 00	6 463.5	4 765.9	3 566.4	1 497.6	1 883.9	470.4	195.5	310.8	19 157.0
<b>LABOUR FORCE</b> , trend series											
Employed persons	'000	Jan 01	3 014.3	2 298.1	1 681.2	673.1	940.7	202.2	93.1	169.7	9 072.1
Unemployment rate	%	Jan 01	6.0	6.2	8.1	7.4	6.2	9.1	6.5	4.8	6.6
<b>WAGE AND SALARY EARNERS</b> , trend series											
Private sector	'000	Sep qtr 00	1 963.1	1 595.4	1 031.7	426.3	600.9	114.8	55.3	83.2	5 870.7
Public sector	'000	Sep qtr 00	461.8	303.8	293.5	112.7	148.8	40.7	22.3	70.0	1 453.6
Total	'000	Sep qtr 00	2 424.9	1 899.2	1 325.2	539.0	749.7	155.5	77.6	153.2	7 324.3
<b>STATE ACCOUNTS</b>											
Gross state product (chain volume measures)(a)	\$m	1999-00	221 375	157 915	103 691	41 381	66 525	11 367	6 466	12 669	620 963
<b>PRIVATE NEW CAPITAL EXPENDITURE</b>											
Total (at current prices), trend series	\$m	Sep qtr 00	4 166	2 620	1 686	668	1 069	138	76	89	10 535
<b>BUILDING APPROVALS</b>											
Dwelling units approved, original series	no.	Dec 00	2 672	3 123	1 620	458	1 065	57	37	97	9 129
Dwelling units approved, trend series	no.	Dec 00	3 142	2 828	1 932	559	1 142	90	42	153	9 930
Value of non-residential building approved, original series	\$m	Dec 00	195.1	300.1	238.9	52.6	43.6	12.8	9.9	12.2	865.4
Value of all buildings approved, original series	\$m	Dec 00	676.5	862.5	466.4	114.1	204.4	22.4	16.2	28.7	2 391.3
<b>ENGINEERING CONSTRUCTION</b> , original series											
Value of engineering construction work done	\$m	Sep Qtr 00	1 534.6	773.4	1 247.8	252.1	457.3	40.9	42.0	55.3	4 403.4
<b>AVERAGE WEEKLY EARNINGS</b> , trend series											
Full-time adult ordinary time earnings	\$	Aug qtr 00	834.7	782.4	747.1	743.5	812.6	745.3	805.1	916.8	796.6
<b>RETAIL TRADE TURNOVER</b> , trend series	\$m	Dec 00	4 407.8	3 028.4	2 407.3	951.4	1 269.2	280.0	134.8	262.6	12 747.5
<b>TOURIST ACCOMMODATION</b> , original series											
Room nights occupied	'000	Sep qtr 00	3 543.3	1 608.7	2 982.4	516.0	945.5	191.0	399.3	262.4	10 449.0
Room occupancy rate	%	Sep qtr 00	59.7	56.2	61.8	53.5	53.9	37.8	69.4	56.8	58.4
<b>NEW MOTOR VEHICLE REGISTRATIONS</b> , trend series	no.	Dec 00	23 588	18 796	13 340	4 417	6 287	1 393	672	1 208	69 701
	Unit	Latest period	Syd.	Melb.	Bris.	Adel.	Perth	Hob.	Dar.	Canb.	Aust.
<b>CONSUMER PRICE INDEX(b)</b>											
Food	no.	Dec qtr 00	134.6	132.8	131.9	134.2	132.7	132.0	132.5	135.9	133.4
Housing	no.	Dec qtr 00	116.1	98.3	112.7	103.9	101.3	105.8	123.9	107.1	107.7
Transportation	no.	Dec qtr 00	138.0	135.6	134.1	137.6	136.3	130.4	131.1	139.3	136.4
All Groups	no.	Dec qtr 00	132.2	130.8	131.6	132.5	128.8	131.2	130.6	131.1	131.3
<b>AVERAGE RETAIL PRICES</b>											
Milk, carton, supermarket sales	1 litre	Dec qtr 00	133	146	141	133	142	126	152	123	..
Bread, white loaf, sliced, supermarket sales	650 g(c)	Dec qtr 00	240	249	224	220	225	237	230	234	..
Beef, rump steak	1 kg	Dec qtr 00	1 255	1 129	1 115	1 284	1 249	1 116	1 195	1 284	..
Chicken, frozen	1 kg	Dec qtr 00	366	330	294	311	363	369	424	370	..
Potatoes	1 kg	Dec qtr 00	120	158	127	81	152	113	142	131	..
Coffee, instant (jar)	150 g	Dec qtr 00	597	584	605	550	631	666	609	615	..
Scotch nip, public bar	30 ml	Dec qtr 00	375	366	312	398	414	303	373	316	..
Private motoring petrol											
Leaded	1 litre	Dec qtr 00	98.6	96.6	86.5	96.6	97.0	97.6	106.1	100.2	..
Unleaded	1 litre	Dec qtr 00	95.5	93.6	83.4	93.5	94.1	95.1	103.2	97.1	..

(a) Experimental series. Users are cautioned these estimates are derived indirectly by calculating a deflator from the expenditure components of the state series concerned. Therefore, in general, the sum of the state estimates does not equal the estimates for Australia. Reference year for chain volume measures is 1998-99.

(b) Base year: 1989-90 = 100.0. The 14th Series Australian Consumer Price Index was introduced September quarter 2000. Some changes include an updated commodity classification and weighting pattern and changes in composition of some groups. For more details of changes, refer to Information Paper: Introduction of the 14th Series Australian Consumer Price Index (Cat. no. 6456.0) released 29 September 2000.

(c) 680g in Hobart and Darwin.

Indicator	Unit	Latest period	NSW	Vic.	Qld	SA	WA	Tas.	NT	ACT	Aust.
<b>POPULATION</b>	'000	Jun qtr 00	0.3	0.3	0.4	0.0	0.3	-0.0	0.5	—	0.3
<b>LABOUR FORCE</b> , trend series											
Employed persons	'000	Jan 01	-0.3	0.0	-0.2	-0.3	0.3	0.2	0.2	-0.3	-0.1
Unemployment rate	%	Jan 01	3.4	—	1.3	—	—	—	3.2	0.1	—
<b>WAGE AND SALARY EARNERS</b> , trend series											
Private sector	'000	Sep qtr 00	0.8	2.1	0.5	1.7	1.6	-0.3	-1.4	-2.1	1.2
Public sector	'000	Sep qtr 00	-0.7	-1.4	0.3	-1.2	0.7	-0.7	—	0.9	-0.4
Total	'000	Sep qtr 00	0.5	1.6	0.5	1.0	1.4	-0.4	-1.0	-0.8	0.8
<b>STATE ACCOUNTS</b>											
Gross state product (chain volume measures)(a)	\$m	1999-00	3.7	4.6	6.3	3.5	4.6	1.1	-0.0	4.9	4.3
<b>PRIVATE NEW CAPITAL EXPENDITURE</b>											
Total (at current prices), trend series	\$m	Sep qtr 00	5.3	-1.4	-6.0	3.7	-7.8	7.8	-29.0	-9.2	0.6
<b>BUILDING APPROVALS</b>											
Dwelling units approved, original series	no.	Dec 00	-21.8	1.2	-25.6	-30.7	-13.3	-50.9	-39.3	-22.4	-16.0
Dwelling units approved, trend series	no.	Dec 00	4.3	4.2	4.7	5.1	-1.6	1.1	-20.8	-2.5	3.4
Value of non-residential building approved, original series	\$m	Dec 00	-27.7	3.3	-9.2	9.1	-30.8	-2.3	-9.2	165.2	-10.2
Value of all buildings approved, original series	\$m	Dec 00	-21.1	4.3	-17.9	-9.9	-13.2	-22.2	-26.7	6.7	-11.2
<b>ENGINEERING CONSTRUCTION</b> , original series											
Value of engineering construction work done	\$m	Sep Qtr 00	-14.6	-10.1	-1.2	-27.4	-31.2	-43.7	-20.6	43.2	16.7
<b>AVERAGE WEEKLY EARNINGS</b> , trend series											
Full-time adult ordinary time earnings	\$	Aug qtr 00	1.2	1.7	2.2	1.7	1.4	1.4	1.1	0.8	1.5
<b>RETAIL TRADE TURNOVER</b> , trend series	\$m	Dec 00	-0.2	0.7	0.2	0.9	-0.4	0.4	-0.1	0.8	0.2
<b>TOURIST ACCOMMODATION</b> , original series											
Room nights occupied	'000	Sep qtr 00	6.6	-1.2	11.4	-3.8	1.2	-23.1	12.6	-11.5	4.5
Room occupancy rate	%	Sep qtr 00	2.8	-1.6	9.4	-5.1	-0.9	-23.9	10.2	-7.9	1.3
<b>NEW MOTOR VEHICLE REGISTRATIONS</b> , trend series	no.	Dec 00	1.5	2.3	0.2	1.2	-1.1	2.1	1.1	1.3	1.2
	Unit	Latest period	Syd.	Melb.	Bris.	Adel.	Perth	Hob.	Dar.	Canb.	Aust.
<b>CONSUMER PRICE INDEX(b)</b>											
Food	no.	Dec qtr 00	0.9	0.9	0.4	0.3	-0.2	0.8	1.1	1.3	0.8
Housing	no.	Dec qtr 00	0.3	0.5	0.6	—	—	0.3	—	0.4	0.3
Transportation	no.	Dec qtr 00	1.0	0.8	-0.4	0.6	0.2	-2.2	0.4	0.5	0.6
All Groups	no.	Dec qtr 00	0.5	0.3	0.2	0.2	0.2	-0.1	0.5	0.3	0.3
<b>AVERAGE RETAIL PRICES</b> (cents)											
Milk, carton, supermarket sales	1 litre	Dec qtr 00	—	-0.7	-0.7	-2.9	-1.4	-2.3	2.0	0.8	..
Bread, white loaf, sliced, supermarket sales	650 g(c)	Dec qtr 00	1.7	1.2	3.2	0.5	1.8	-0.8	2.7	0.4	..
Beef, rump steak	1 kg	Dec qtr 00	2.6	1.4	1.0	6.8	9.3	3.3	-7.9	4.0	..
Chicken, frozen	1 kg	Dec qtr 00	-0.8	-6.5	-16.9	-8.3	0.8	13.5	2.4	0.5	..
Potatoes	1 kg	Dec qtr 00	10.1	17.0	13.4	8.0	12.6	9.7	5.2	8.3	..
Coffee, instant (jar)	150 g	Dec qtr 00	-4.3	-6.3	0.2	-0.2	10.7	1.7	12.2	-3.3	..
Scotch nip, public bar	30 ml	Dec qtr 00	1.1	-0.5	0.3	3.4	0.7	2.4	0.8	2.3	..
Private motoring petrol											
Leaded	1 litre	Dec qtr 00	2.8	1.8	-1.1	1.3	—	-4.5	2.2	1.6	..
Unleaded	1 litre	Dec qtr 00	2.7	1.7	-1.4	1.0	0.1	-4.8	2.3	1.6	..

(a) Experimental series. Users are cautioned these estimates are derived indirectly by calculating a deflator from the expenditure components of the state series concerned. Therefore, in general, the sum of the state estimates does not equal the estimates for Australia. Reference year for chain volume measures is 1998-99.

(b) Base year: 1989-90 = 100.0. The 14th Series Australian Consumer Price Index was introduced September quarter 2000. Some changes include an updated commodity classification and weighting pattern and changes in composition of some groups. For more details of changes, refer to Information Paper: Introduction of the 14th Series Australian Consumer Price Index (Cat. no. 6456.0) released 29 September 2000.

(c) 680g in Hobart and Darwin.

## INDEX OF FEATURE ARTICLES PUBLISHED IN ACT BUSINESS INDICATORS

<i>Issue</i>	<i>Title</i>	<i>Page reference</i>
Feb 2001	Labour Mobility in the ACT	7
Jan 2001	Child care in the ACT, June 1999	7
Dec 2000	Cafes and Restaurants Industry in the ACT	6
Dec 2000	Legal Services Industry in the ACT	8
Nov 2000	Manufacturing Industry in the ACT	6
Oct 2000	Computing Services Industry 1998–99	6
Sep 2000	Motor Vehicle Use in the ACT	6
Aug 2000	Household Expenditure on Goods and Services in the ACT	6
Jul 2000	Small Business in the ACT	6
Jun 2000	Sports Attendance	7
	Attendance at Selected Cultural Venues	8
May 2000	Employee Earnings, Benefits and Trade Union Membership	7
Apr 2000	Emergency Services and Public Transport Usage in the ACT	8
Mar 2000	Forms of Employment	6
Feb 2000	Job Search Experience of Unemployed Persons	6
Jan 2000	Transition from Education to Work, May 1999	6
Dec 1999	Structure of the ACT Economy	6
	Participation in Sport and Physical Activities	7
Nov 1999	Crime and Safety in the ACT	6
Oct 1999	Labour Force Experience in the ACT	6
Sep 1999	Career Experience in the ACT	7
	Carers in the ACT	9
Aug 1999	Stock of Human Resources in Science and Technology	6
Jul 1999	Persons with a Disability in the ACT	6
Jun 1999	Participation in Education in the ACT	6
May 1999	Transition from Education to Work of Persons Aged 15–64 in the ACT	7
Apr 1999	Persons Not in the Labour Force in the ACT	6
Mar 1999	Education and Labour Force Status of the ACT's Young People	6
Feb 1999	Income and Living Standards in the ACT	6
Jan 1999	Education and Training Experience of ACT Residents	6
Dec 1998	Families and Labour Force Status in the ACT	6
Nov 1998	Retrenchment and Redundancy in the ACT	6
	Retail Turnover in the ACT	9
Oct 1998	Research and Experimental Development in the ACT	6
Sep 1998	Labour Force Mobility in the ACT	6
	Income Distribution in the ACT	8
Aug 1998	ACT Investors in Rental Dwellings	6
Jul 1998	Retirement and Retirement Intentions	6
Jun 1998	Profile of Small Business in the ACT	7
May 1998	Participation in Education in the ACT	7
Apr 1998	Retail Turnover in the ACT by Type of Retailing and Shopping Centre	7
	Shopping Preferences in the ACT	7
Mar 1998	Characteristics of Small Business	8
Feb 1998	Weekly Earnings of Employees in the ACT	8

## FOR MORE INFORMATION...

- INTERNET* **www.abs.gov.au** the ABS web site is the best place to start for access to summary data from our latest publications, information about the ABS, advice about upcoming releases, our catalogue, and Australia Now—a statistical profile.
- LIBRARY* A range of ABS publications is available from public and tertiary libraries Australia-wide. Contact your nearest library to determine whether it has the ABS statistics you require, or visit our web site for a list of libraries.
- CPI INFOLINE* For current and historical Consumer Price Index data, call 1902 981 074 (call cost 77c per minute).
- DIAL-A-STATISTIC* For the latest figures for National Accounts, Balance of Payments, Labour Force, Average Weekly Earnings, Estimated Resident Population and the Consumer Price Index call 1900 986 400 (call cost 77c per minute).

## INFORMATION SERVICE

Data which have been published and can be provided within five minutes are free of charge. Our information consultants can also help you to access the full range of ABS information—ABS user-pays services can be tailored to your needs, time frame and budget. Publications may be purchased. Specialists are on hand to help you with analytical or methodological advice.

- PHONE* **1300 135 070**
- EMAIL* **client.services@abs.gov.au**
- FAX* 1300 135 211
- POST* Client Services, ABS, GPO Box 796, Sydney 1041

## WHY NOT SUBSCRIBE?

ABS subscription services provide regular, convenient and prompt deliveries of ABS publications and products as they are released. Email delivery of monthly and quarterly publications is available.

- PHONE* 1300 366 323
- EMAIL* subscriptions@abs.gov.au
- FAX* 03 9615 7848
- POST* Subscription Services, ABS, GPO Box 2796Y, Melbourne 3001



2130380002016  
ISSN 1320-808X

RRP \$17.50

© Commonwealth of Australia 2000